



**WESTERN PORT SEAGRASS PARTNERSHIP
LTD**

ACN 096 685 871 - ABN 81 096 685 871

ANNUAL REPORT 2016/2017



Your directors present this report on the company for the financial year ended 30 June 2017.

1. DIRECTORS AND MEETING ATTENDANCE

The Western Port Seagrass Partnership held two formal board meetings and an AGM in 2016/2017:

Meeting 78, Monday 22nd August 2016

Meeting 79, Monday 15th May 2017

AGM & Strategic Review – Monday 21st November 2016

The name of each person who was a director during the financial year 2016/2017 and their meeting attendance is shown below. Director's details are shown in Appendix 1.

Name:	Meetings Attended:
Bate, Nina	2
Clarke, John	0 (deceased 9/4/17)
Cox, Richard	3
Ealey, Tim	1 (resigned 28/6/17)
Hansen, Tania	0 (resigned 9/11/16)
Kirkman, Hugh	2
Mackay Moragh	0 (resigned 27/9/16)
Newton, Douglas	3
Parry, Greg	3
Stevenson, Ian	3
Thomas, Jeffrey	1

2. OFFICE BEARERS

Chairman	Ian Stevenson
Company Secretary / Treasurer	Doug Newton
Meeting Secretary	Nina Bate
Honorary Treasurer	Tania Hansen (resigned)

3. COMMITTEES

Executive: I. Stevenson, D. Newton, Nina Bate

Public Fund Management Committee: P. Attiwill, D. Newton, J. Clarke (deceased)

Marketing, Communications & Volunteer Engagement: M. Mackay (Chair) (resigned), Jeff Thomas, John Clarke (deceased), Nina Bate, Denis Cox.

Science & Research: Hugh Kirkman (Chair), Greg Parry, Ian Stevenson.

Special Projects – Mangroves: Greg Parry (Chair), Tim Ealey (resigned), Dick Cox, Ian Stevenson, Bob Couchman, Denis Cox.

Special Projects – Seagrass Biodiversity – Hugh Kirkman (Chair), Dick Cox, Ian Stevenson, Nina Bate, Greg Parry.

Special Projects – New Web Site – Jeff Thomas (Chair), Nina Bate, Doug Newton.



4. BOARD CHANGES

Efforts in the previous year to refresh and strengthen the Board's core skills were undone by a series of resignations and the death of a founding Director.

Resignations were received by Tania Hansen, Moragh McKay and Tim Ealey.

We were also saddened at the death of John Clarke.

Current Executive Positions:

- Ian Stevenson - Chairman
- Doug Newton - Company Secretary and Treasurer
- Nina Bate - Meetings Secretary

5. PROCEEDINGS ON BEHALF OF THE COMPANY

No person has applied for leave of Court to bring proceedings on behalf of the company or intervene in any proceedings to which the company is a party for the purpose of taking responsibility on behalf of the company for all or any part of those proceedings. The company was not a party to any such proceedings during the year.

6. DIRECTORS' REPORT

The Board of Western Port Seagrass Partnership is proud to present the following report of activity for the 2016/17 financial year.

Strategic Planning

A comprehensive review of our Company was again conducted to structure the annual activity program, using a broad framework of themes in leadership, research and education.

This review provided a focus for all aspects of our operation. Tools used during 2016/17 encompassed a range of approaches, particularly emphasizing our 'Partnership' function with an extended range of interested parties – notably active involvement in on-ground activities.

The Western Port Seagrass Partnership's annual activity program remains consistent with objectives of its governance charter:

1. Carry out and support activities that will conserve, protect and monitor the natural ecosystem and biodiversity of Western Port, and in particular its native seagrasses, mangroves, saltmarshes and coastal vegetation.
2. Encourage and educate catchment communities to improve the health of waterways and reduce sediments, nutrients and pollutants entering Western Port.
3. Encourage or enable research aimed at preserving, protecting and monitoring the natural ecosystem of Western Port, especially its native seagrasses, mangroves, saltmarshes and other coastal vegetation.
4. Educate school and community groups about the special environmental values of Western Port, its coast and catchment and the key environmental issues impacting on Western Port and how these might be addressed. In particular:



- The biology and means of rehabilitating seagrasses, mangroves and saltmarshes;
 - The morphology and hydrology of Western Port and its catchment;
 - The sources and effects of sediments, nutrients and pollutants entering Western Port.
5. Develop environmental rehabilitation programs with the community and other groups (partnerships).
 6. Facilitate coordinated and strategic approaches to protecting Western Port.
 7. Identify and address information and activity gaps concerning the biodiversity of Western Port and its seagrass communities.

Progress activity in implementing 2016/17 key objectives:

A. Advocate a ‘Shapiro II study’ of Western Port to address critical information gaps and work with our regional partners to encourage Government adoption of the proposal.

Key actions related principally to our leadership function as an influential community advocate promoting Western Port’s healthy ecosystem. Of note:

- As part of its community-based leadership charter, the Western Port Seagrass Partnership continues to advocate ongoing research programs in ecological health for Western Port, particularly seagrass, mangrove and saltmarsh
- Expanded use of a ‘citizen science’ approach continues to assist information gathering by stakeholders, especially local community and volunteers. This includes further development of partnerships and involvement with all relevant agencies of government, NGO’s and particularly community interests.

B. Slow the flow of water entering Western Port to dropout sediment loads, by working with Melbourne Water and Land Care to improve stream and land management practices.

The Western Port Seagrass Partnership has actively pursued a range of exploratory activities with various stakeholders to:

- Encourage further rigorous scientific research for Western Port, particularly progress of the Melbourne ‘Water Scientific Knowledge Review’, also Western Port Ramsar Plan review. Our approach is to collaborate with agencies & community groups to promote initiatives in sediment & nutrient reduction into Western Port
- Continue to promote CSIRO figures on sediment inflow as a means of influencing catchment works by agencies and community
- Interact with coastal land owners, tenants and local communities, especially at Lang Lang and Grantville, for awareness-raising and activate works to arrest sediment loads from both catchments and cliff sources



- Keep actively informed and educate others on scientific updates related to the monitoring of sediment sources into Western Port

C. Reduce sediment inputs from shoreline erosion by continuing mangrove planting projects and working for the development of a sustainable coastal management plan for those areas likely to be impacted upon by climate change effects.

Mangrove planting activities, summer 2016/17

Volunteers assisted with planting on seven days during the most recent summer/autumn planting period, although preparation and monitoring of mangrove survival involved a smaller group on many more days in the field.

WPSP continued its association with St Joseph's Primary School, Crib Point. They grew ~700 seedlings in their own glasshouse and in December ~50 students planted 500 of these at Grantville. During January further plantings, using smaller groups of volunteers, planted 1500 seedlings and 100 seeds at Lang Lang South, and 500 seedlings and a further 400 seeds at Grantville. During April, it commenced removing PVC guards from plants large enough not to need them. Circles of artificial turf were inserted around the rim of a further 300 tubes, to test their effectiveness at reducing ring barking by the sharp top of the tubes (Figure 1).



Figure 1. Ring of artificial turf attached by fold back clips around the rim of protective tube to prevent ring barking.

During the last summer John Eddy, who has been working closely with WPSP, developed a much-improved method of planting seeds. Seeds are attached to an anchoring stake using a rubber band which deteriorates by the time the seeds have become anchored (Figure 2). John has found survivorship of ~75% over the first 3 months of life for seeds planted this way. This seed planting method is far better than any we have tried in the past, and we are hopeful it may make growth of seedlings in a specialised nursery unnecessary.

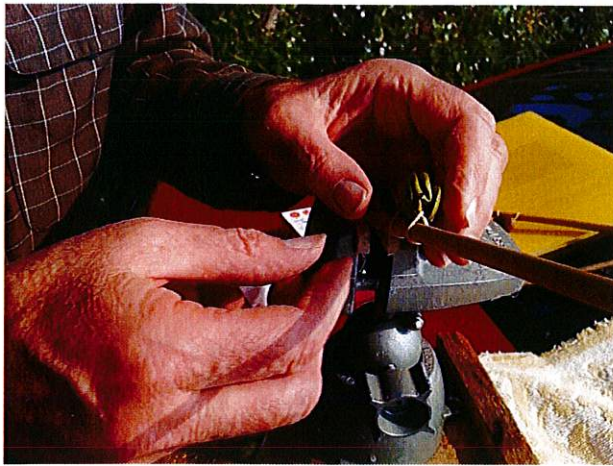


Figure 2. A mangrove seed being attached to anchoring stake using a rubber band.

Grants from Landcare and PPWCMA and Coast care enabled the partnership to buy an all-terrain vehicle (Figure 3) that has greatly reduced the physical effort to get gear and plants on site, and meant volunteers' time could be used as efficiently as possible for planting mangroves. In recognition of the many years of pioneering work on mangrove planting undertaken by Tim Ealey, the vehicle has been named TIM.



Figure 3. 'Tim' our Kubota all-terrain vehicle used in all the partnership's recent field work

Field monitoring of mangrove survival in all plots is conducted each May and November, and a report on the results of the most recent monitoring will be made available.

WPSP has been fortunate to benefit from project management initiatives of its Director Greg Parry who has overseen significant and ongoing activity in the mangrove revegetation evolution. Other Directors have also provided significant assistance in critical aspects of planning, on ground works, volunteer recruitment, volunteer recruitment, promotion, education, support and monitoring.

Thank you to all participants in this ongoing scientific research and education initiative.



D. Develop projects that will assist meeting its objectives and be attractive to sponsorship.

Seagrass Biodiversity Inventory

The main practical activity to assist ongoing research and education was to conduct a beam trawl near Yaringa Marine Park for purposes of improving a biodiversity inventory for seagrass. Comparisons of seagrass and unvegetated benthic zone were undertaken. This initiative was conducted in Feb/March 2017, refreshing the initial 2015/16 project. As project manager, Director Hugh Kirkman compiled the following summary:

A further inventory of animals living in seagrass and on nearby unvegetated substrate was carried out on 21 February 2017 and on 8 March 2017. The method used on 21 February was different from that used on 8 March because the physical effort of putting in and withdrawing the beam trawl from a small inflatable was very testing and a larger vessel was used in March with GPS being used rather than a tape measure.

There were two seagrass sites and two unvegetated sites chosen. These sites were about 500 m from the previous year's sites. The two seagrass sites were on the east and west sides of a channel running north south a little south of the Yaringa Marina channel. Unvegetated sites were close to the vegetated sites on the deeper edge of the seagrass bed closer to the channel (Fig. 1).

Figure 1. Yaringa trawling sites.



Mobile seagrass benthic epifauna were captured using a roller beam trawl 1 m wide, 0.5 m deep and with net panels of mesh size 3 mm and a cod end of mesh size 1 mm (Fig 2). It was towed three times at each site at approximately 0.04 m/s using GPS to measure 50 m. Beam trawling took place at night, in depths of 3–6 m in the sub-tidal zone of *Heterozostera nigricaulis* at Yaringa in Western Port.

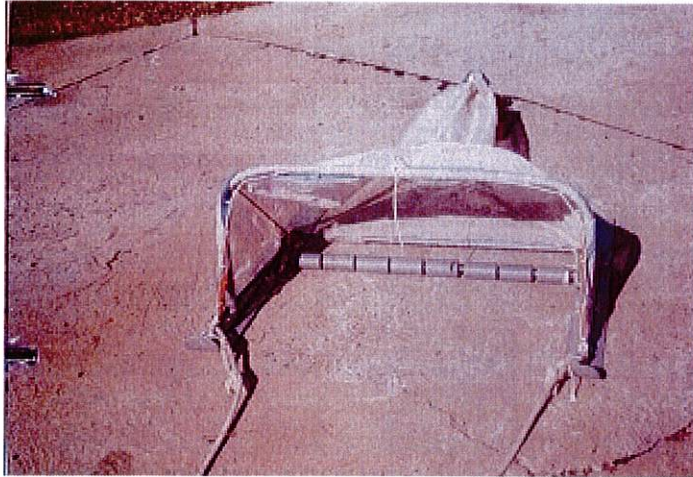


Fig. 2

Roller beam trawl

Two seagrass sites and two unvegetated sites were chosen. We used GPS to measure the trawl distance on 8 March. Trawl samples were returned to the laboratory, preserved with methylated spirits then sorted into major taxonomic groups by volunteers the next day. Any unusual animals were placed in separate jars and all were then preserved in 70% methylated spirits and sent to a taxonomist for identification and counting.

Results showed there were over six times more animals caught on seagrass as there were on unvegetated sandy silt. Diversity, too, was greater in the seagrass bed.

The outstanding number of crustacea overwhelmed the abundance of animals, while the small shrimp *Pandalidae* was the most abundant. It is about 5 mm long and more abundant in seagrass samples than on unvegetated substrate. Although there were more fish on seagrass than on unvegetated sandy mud, there was a greater diversity on the unvegetated substratum. There were surprisingly few fish caught in these beam trawls. Most were juveniles but few would become of commercial or recreational importance as adults.

Figure 3 – Examples of animals found living in seagrass.



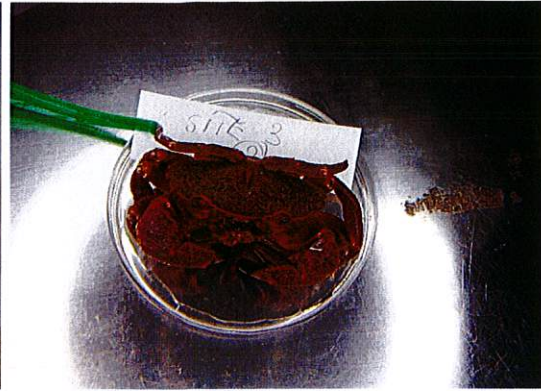
Small Shrimp



Male pipefish, note egg compartments



Squilla or mantid shrimp



Crab

Beam trawling in the intertidal seagrass *Zostera muelleri* would also detect some of the animals fed on by the migratory and shore birds found in Western Port. This inventory would be useful to those interested in the Ramsar site.

There were 12,552 animals collected from 6 beam trawls in seagrass and 1908 collected from unvegetated substrate, i.e. 15% of the number in seagrass. Pipefish were again the most spectacular fish caught with seven species identified.



Figure 4 - Volunteers cleaning and identifying families after beam trawl sample collection.

Western Port Seagrass Partnership is very grateful for the ongoing assistance from volunteers, particularly the sorting of samples on-site. Also to Esso, for its sponsorship assistance to our work and to Yaringa Marina and Patricks for their financial and in-kind support.



E. Extend our schools program to encourage participatory learning and the development of suitable educational materials for regional schools and education centres.

The WPSP DVD, website articles, mangrove planting guide plus verbal information continue to be shared with all interested parties including school groups. Involvement of schools has continued where interest has emerged. However, this now forms one component of its expanded volunteer input to practical activity in both the mangrove revegetation plus beam trawl activities.

F. Develop new initiatives to promote the Western Port DVD and Web Site and use these as a vehicle to promote understanding and appreciation of Western Port's treasures and challenges.

Website upgrade

Jeff Thomas has continued with significant changes to the website, working weekends to update to the new content management system. He has made good progress, ensuring that the new web site is user-friendly and accessible on a variety of platforms, including mobile devices such as the iPad and iPhone. Revision and updates to the web site content will be commenced once the current material is transported to the new platform.

Much of the current factual material is still pertinent and will be updated where needed, especially for mangrove and seagrass content. Priority will then be given to updating reports about our major projects and adding the wonderful collection of underwater photographs provided by Jan Watson.

The Directors wish to record their appreciation for the huge amount of effort that Jeff Thomas has gone to with this project to date.

Media articles & Advocacy through Education

Western Port Seagrass Partnership has proven to be a useful community-based reference for various media articles on ecosystem health and promotion of seagrass/mangrove practical initiatives. This is particularly useful to provide a scientific element to issues such as coastal erosion. Media articles were featured in 2016/17:

- Waterline News
- Bass Coast
- Leader Newspaper group
- Mornington Peninsula News group
- Phillip Island and San Remo Advertiser

Further to this, representation was made to community organizations, agencies and planning processes including the Western Port Ramsar Plan development (DELWP),



Grantville Foreshore Management Plan (Parks Victoria), speaker presentations (Sorrento Rotary, Tyabb/Somerville Rotary, Society for Australian Plants Mornington Peninsula, Melbourne, Field Naturalists).

Much ongoing input was provided to various local bodies involved in port-related planning, especially the Port of Hastings and the contractor Patricks that had its contract expire at 30 June 2017.

These occasions not only assist to increase awareness but they also forge contacts with interests for networking, advocacy and possible involvement in WPSGP activities.

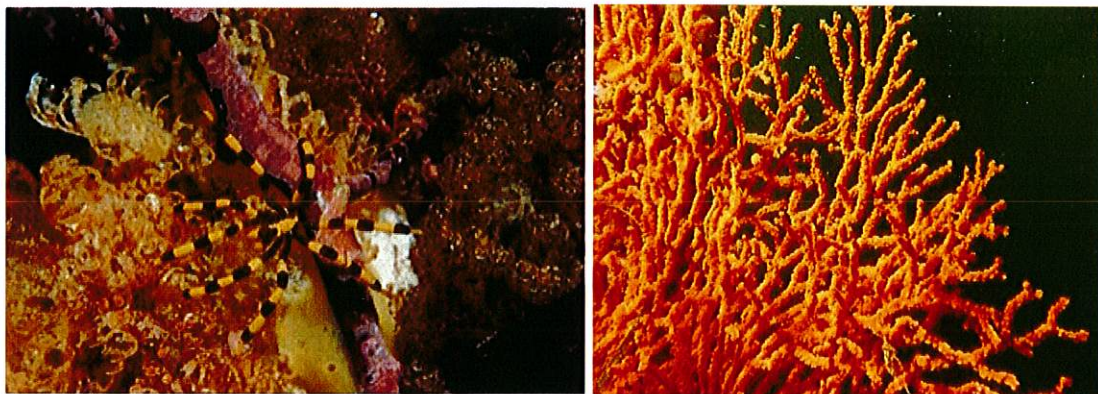
A capstone project using RMIT's 'Environmental Social Science' was delivered that assisted all stakeholders better understand social values/expectations at Grantville Foreshore. Other academic institutions were linked including Deakin University (Blue Carbon initiative), Chisholm TAFE, schools (mangrove planting activities), Monash University (catchment research especially nutrients and sediment loadings).

Jan Watson's marine photographic collection

Distinguished marine biologist Dr Jan Watson, who has worked on ecological surveys within Western Port for many years, has provided us with a selection of her wonderful coloured underwater photos.

The WPSP will be aiming to feature these photos on our upgraded web site in the coming year and we hope that they will provide a valuable insight into some of the seldom seen, but wonderful biodiversity that exists within Western Port.

Figure 5 – Examples of Jan Watson's Photos:





Use of social media

The Western Port Seagrass Partnership recognizes the importance of communicating its activities to a wider public. To this end we have initiated both Facebook and Twitter accounts. These accounts are used to:

- provide updates on Western Port Seagrass news,
- put out calls for volunteers for field activities,
- update both volunteers and the general public on our planting programs, and
- circulate scientific information on mangroves, seagrass and the Western Port environment.

We currently have 91 followers on Facebook, but far fewer on Twitter. We have seen 2016/17 as a year to 'dip our toes' into social media, and the positive response has shown that we need to put further effort into utilising this method of communication in the future.

G. Better use of Membership skills and supporters

It is acknowledged that the organization has considerable untapped potential amongst its registered supporters and membership. Resignations from the Board meant this identified challenge went largely unaddressed. However, some very valuable connections were made with key university research groups who have brought new knowledge to our organization and assisted us greatly with our mangrove and seagrass projects.

Acknowledgments are also duly directed to those providing pro-bono support for all our governance requirements. As a 'small organization' we are now exempt from auditing, but are grateful for the ongoing service provided by our honorary accountant Dianne Wickham.

The Board acknowledges the assistance of a diverse range of supporters, across a number of activities, who have enabled us to meet our year's goals. Although formal membership numbers remained static, a large number of both active and passive volunteers now comprises a growing interest group.

H. Board Changes

John Clarke

It is with great sadness that the Board of the Western Port Seagrass Partnership noted the passing of one of our founding Directors and Trustees, John Clarke on April 9th, 2017.

Alongside Professor John Swan, John Clarke helped forge and launch the Western Port Seagrass Partnership – a not for profit organization which champions community desire for independent advocacy and fearless protection of the wonderful ecosystem of Western Port through education, awareness, partnership projects and scientific knowledge.

John Clarke made an early contribution to the establishment of our informative web site featuring many of the beautiful photographs of animals and plants he recorded on



his property at Phillip Island. Clarke, John Swan and John Barnard were also leaders in establishing the Phillip Island Conservation Society.

However, perhaps his most valuable legacy has been his direction and production of an outstanding resource, “Western Port The DVD”. This DVD is hugely popular and succinctly describes the treasures and challenges of Western Port and what people can do to help. The DVD includes fabulous interviews with local champions and scientists and several historic documentaries about Western Port and its wildlife.

Our Board meetings will never be the same without that trademark wit, clarity and “out of the box” thinking and inspiration.

Most of all we will miss the company of this thoroughly decent man.

John Barnard

John Barnard was a retired foundation Director (2015) of the Western Port Seagrass Partnership. His passing on 9 June 2017 causes us to reflect on and acknowledge his contributions to conservation efforts on Philip Island and for the broader Western Port ecosystem. His positive influence on the people of Phillip Island and broader community are warmly acknowledged.

Moragh MacKay & Tania Hansen

Resignations by Moragh MacKay and Tania Hansen followed distinguished inputs from both in strategic planning and financial acumen respectively. In response, the Board re-structured with Doug Newton kindly re-establishing his involvement as a joint Company Secretary and Treasurer. Nina Bate continued as our Minute Secretary. The Board is to be thanked for all ongoing commitments of time and effort from all its Directors in adapting to these changes.

Dr. Tim Ealey

In May 2017, our ‘legendary’ Director Tim Ealey resigned from the Board. On behalf of the current and previous Boards, we expressed our gratitude to Tim Ealey for all his enthusiasm, research, community engagement and on-ground work over the previous decade. Tim was an inspiration to all, be it in scientific advice, leadership in on-ground projects, innovation, teaching and overall mentorship. Tim Ealey noted how touched he was by the signage arranged by Dick Cox for the new WPSP Kubota vehicle. Tim will be missed!

I. Western Port Seagrass Public Fund

The Public Fund currently holds an amount of \$7000 for distribution at a future time to be determined. There were no active campaigns conducted during 2016/17 however some donations were forthcoming to coincide with the passing of Director John Clarke.

The death of John Clarke created a vacancy on the Public Fund Management Committee that will need to be filled shortly.



Summary

The Western Port Seagrass Partnership continues as a productive and viable entity. Its functions of leadership, research and education remain as a highly effective framework for our activity. Financial status remained stable over 2016/17 with significant reserves if required.

Projects continue on an active level with mangrove & seagrass ecological study initiatives still evolving. Links through partnerships to other stakeholders are numerous and noteworthy.

Commitment and dedication by all contributors must be complimented. Thank you to all involved including the Board, members, supporters, volunteers.

7. FUNDING

Funding from the following traditional sources in 2016/2017:

1. Federal / State Governments:	\$7,800.00
2. Local Government:	\$0.00
3. Sponsors (ESSO)	\$4,000.00
4. WPS Public Fund	\$0.00
Total:	\$11,800.00

8. OPERATING RESULTS

The deficit for the year was **\$5,960.00**.

The Company is exempt from paying income tax.

9. SIGNIFICANT CHANGES IN STATE OF AFFAIRS

There were no significant changes in the state of affairs of the company during the financial year, other than those referred to elsewhere in this report.

10. AFTER BALANCE DATE AFFAIRS

No matters or circumstances have arisen since the end of the financial year which significantly affected or may significantly affect the operations of the company, the results of those operations, or the state of affairs of the company in future financial year.

11. FUTURE DEVELOPMENTS

As for last year, it is most probable that developments in operations of the company and the expected results of those operations in future financial years will follow the current pattern.



12. ENVIRONMENTAL REGULATION

Some of the company's operations, namely field projects, are carried out under relevant Commonwealth and State legislation, especially the coastal planting activities.

13. DIVIDEND PAYMENT

The company is a company limited by guarantee incorporated and domiciled in Australia. It does not have share capital. The directors of the company are precluded by the company's Constitution from recommending the payment of any dividend.

14. INDEMNIFYING OFFICERS OR AUDITOR

During or since the end of the financial year the company has not given an indemnity, entered into an agreement to indemnify, or paid or agreed to pay insurance premiums to insure each director against liabilities for costs and expenses incurred by them in defending legal proceedings arising out of their conduct while acting in the capacity of director of the company.

15. THANKS

To our honorary accountant, Dianne Wickham of MoreyWickham Pty Ltd.

16. AUDIT

As WPSP Ltd is classified as a small organization (Income less than \$250,000 PA, it is exempt from the requirement for an independent audit. The financial statement that forms part of this annual report was prepared by our independent accountant Morey-Wickham Pty Ltd and approved by the WPSP Ltd Board.

Signed in accordance with a resolution of the Board of Directors:

Chairman

Dated: 26/08/17

Secretary

Dated: 26/08/17



APPENDIX 1 DIRECTORS' PARTICULARS

CLARKE, John (Deceased)

Qualifications: Author, actor, film producer

Experience: Extensive, especially informal consultancies with a succession of Australian governments. Member of former Board of Film Victoria; Member of Schools Innovation Commission.

Responsibilities: Member of the Public Fund Management Committee.

EALEY E.H.M. (Tim) (Retired)

Qualifications: PhD, MSc, OAM

Experience: Foundation Director of Graduate School of Environmental Science (Monash University) and a member of Port Phillip and Western Port Catchment Management Authority. Former Senior Lecturer in Zoology at Monash University. Has studied Biology on Heard Island giving his name to Ealey Glacier, oceanography around the Antarctic Continent, kangaroos in the Pilbara, native mammals and fire ecology.

Responsibilities: Field Projects Manager & Member of the Education and Volunteer Committee.

MACKAY, Moragh (Retired)

Qualifications: BA Apps.Sci Parks, Recreation and Heritage; Cert IV Work Place Training and Assessment.

Experience: Fourteen years of working as a Coordinator in the Westernport Region with Landcare and Coastal Groups; development and delivery of environmental education in schools; partnership development with community, government and business.

Responsibilities: Member of the Education and Volunteer Committee, Grant writing.



NEWTON, Doug

- Qualifications: BSc (LaTrobe) DipEd (Hawthorn)
- Experience: Doug was until 2005 an Assistant Director with the Environmental Protection Authority (Victoria). During his 20 years with EPA Victoria he developed extensive knowledge and experience with major projects, policy development and operational programs covering waste management, catchment management, environment protection, partnership development and community engagement. He joined the Board in 2005.
- Responsibilities: Company Secretary and Treasurer
Member of Public Fund Management Committee.

STEVENSON, Ian

- Qualifications: Bachelor of Science (Monash): Grad. Diploma Education
Master of Environmental Science (Monash)
Diploma Heritage Interpretation (Deakin)
- Experience: Ian is an environmental scientist with over twenty years local government experience at all levels plus consultancy in fire and catchment management. Currently Executive Officer Western Port Catchment Committee (affiliated with Mornington Peninsula & Western Port Biosphere Foundation. Former Chair and current Director of the Dolphin Research Institute; Chair Mornington Peninsula Shire Environment Week.
Ian has worked and lived in the greater Western port catchment for fifty years.
- Responsibilities: Board Chairman

KIRKMAN, Hugh

- Qualifications: Bachelor of Agricultural Science (Queensland Uni)
Master of Agricultural Science (Queensland Uni)
PhD (Uni of WA)
- Experience: Hugh has specialized in seagrass as a marine scientist with CSIRO for 28 years. He mapped the seagrass of Western Port in 1974. Previously, a member of the South Australian Scientific Working Group for Marine Protected Areas. He recently co-authored a report on mangrove restoration and erosion in Western Port. He completed a report on threats to Western Port during and after the Port of Hastings development. Member of Australian Marine Sciences Association and Environmental Institute of Australia and New Zealand.
- Responsibilities: Science Reviewer & Adviser



COX, Richard

Qualifications Master Mariner

Experience Dick had extensive experience as a seagoing Deck Officer in all roles from Cadet to Master from 1961 to 1986, followed by 4 years as a chicken farmer before returning to his profession in 1990 as Assistant Harbour Master in Western Port, becoming Harbour Master, Port of Hastings from 1996 to 2008. In Partnership with EPA Director, Doug Newton produced the Environmental Management Plan for the Port of Hastings, the first in an Australian port. Retiring in 2008 then initially part time consulting before devoting his time to volunteering with Rotary, the Western Port community and environment. Dick has lived in the area since migrating to Australia in 1971.

Responsibilities Field Projects Facilitator & Schools Liaison

PARRY, Greg

Qualifications B.Sc (Hons) PhD (University of Melbourne)

Experience After teaching in the Biology Department at Monash University for four years he became an environmental scientist within the Victorian Government. During the past 30 years he worked for VIMS, Department of Planning, EPA and Fisheries. Most of his experience has been with marine environmental research and he has lead studies examining impacts of scallop dredging, channel dredging, exotic species, nutrients and contaminants. Since 2010 he has run his own marine environmental consulting company. His association with Western Port goes back to fishing and diving there in his youth, and in the 1970s he was involved in field studies that formed part of the Shapiro report.

Responsibilities Assisting with the design and documentation of field studies.

BATE, Nina

Qualifications: BSc with Honours in Marine Biology,
University of Victoria, Canada

Experience: Eighteen years with the Environment Protection Authority, focusing on freshwater and estuarine ecology. Prior to the EPA, Nina's work interests included freshwater algae, marine biofouling and terrestrial insect taxonomy.

Responsibilities Science liaison and communication, including Social Media.



THOMAS, Jeffrey

Qualifications: BInfoTech – Otago Polytechnic – NZ
DipBC – Southern Institute of Technology – NZ
Certified Information Systems Security Professional (CISSP)
Offensive Security Certified Expert (OSCE)

Experience: Twelve years of experience in the information technology industry across multiple areas including software engineering, web application development and information security.

Responsibilities Social Media, Web Site and Modern Communications.

HANSEN, Tania (Retired)

Qualifications: BA, Linguistics, Monash University
BBSc, Psychology, Monash University

Experience: Extensive community involvement and engagement with Bendigo Community Bank branches, particularly in Lang Lang and surrounds. Has a history in banking and finance as well as many volunteer committee positions with a range of local community groups and organizations including but not limited to Koo Wee Rup Regional Health, Rotary Club of Koo Wee Rup/Lang Lang, Lang Lang Business Group and Lang Lang Township Committee.

Responsibilities Honorary Treasurer (prior to resignation)



WESTERN PORT SEAGRASS PARTNERSHIP LIMITED
ACN 096 685 871

STATEMENT OF FINANCIAL POSITION
AS AT 30 JUNE 2017

	Note	2017 \$	2016 \$
CURRENT ASSETS			
Cash assets	4	97,141	100,811
Trade & Other Receivables	5	-	2,129
TOTAL CURRENT ASSETS		<u>97,141</u>	<u>102,940</u>
TOTAL ASSETS		<u>97,141</u>	<u>102,940</u>
CURRENT LIABILITIES			
Trade & Other Payables	6	161	-
TOTAL CURRENT LIABILITIES		<u>161</u>	<u>-</u>
TOTAL LIABILITIES		<u>161</u>	<u>-</u>
NET ASSETS		<u>96,780</u>	<u>102,940</u>
EQUITY	7		
Retained surplus (accumulated deficit)		<u>96,980</u>	<u>102,940</u>
TOTAL EQUITY		<u>96,980</u>	<u>102,940</u>

The accompanying notes form part of these financial statements



WESTERN PORT SEAGRASS PARTNERSHIP LIMITED
ACN 096 685 871

STATEMENT OF COMPREHENSIVE INCOME
FOR THE YEAR ENDED 30 JUNE 2017

	Note	2017 \$	2016 \$
Revenue	2	13,807	17,557
Expenses	3		
Administration expenses		(1,214)	(3,841)
Project & sponsorship expenses		(18,553)	(22,116)
Surplus(Deficit) attributable to the company/Total Comprehensive Income for Year		<u>(5,960)</u>	<u>(8,400)</u>

The accompanying notes form part of these financial statements



WESTERN PORT SEAGRASS PARTNERSHIP LIMITED
ACN 096 685 871

STATEMENT OF CHANGES IN EQUITY
FOR THE YEAR ENDED 30 JUNE 2017

	Note	\$ Accumulated Funds
Balance as at 1 July 2015		<u>111,340</u>
Surplus(Deficit) attributable to the company for the year		<u>(8,400)</u>
Balance as at 30 June 2016		<u>102,740</u>
Surplus(Deficit) attributable to the company for the year		<u>(5,760)</u>
Balance as at 30 June 2017		<u>96,980</u>

The accompanying notes form part of these financial statements



WESTERN PORT SEAGRASS PARTNERSHIP LIMITED
ACN 096 685 871

STATEMENT OF CASH FLOWS
FOR THE YEAR ENDED 30 JUNE 2017

	2017	2016
	\$	\$
Cashflow From Operating Activities:		
Cash receipts in the course of operations	16,212	16,834
Cash payments in the course of operations	(21,887)	(29,771)
Interest received	2,007	2,557
	<hr/>	<hr/>
Net Cash provided by (used in) operating activities	(3670)	(10,380)
	<hr/>	<hr/>
Cashflow From Investing Activities:	-	-
Net cash provided by (used in) investing activities	-	-
	<hr/>	<hr/>
Cashflow From Financing Activities:	-	-
Net cash provided by (used in) financing activities	-	-
	<hr/>	<hr/>
Net increase (decrease) in cash held	(3,670)	(10,380)
Cash and cash equivalents at the beginning of the financial year	100,811	111,191
	<hr/>	<hr/>
Cash and cash equivalents at the end of the financial year	97,141	100,811
	<hr/>	<hr/>

The accompanying notes form part of these financial statements



WESTERN PORT SEAGRASS PARTNERSHIP LIMITED
ACN 096 685 871
NOTES TO AND FORMING PART OF THE CASH FLOW STATEMENT
FOR THE YEAR ENDED 30 JUNE 2017

RECONCILIATION OF CASH

Cash and cash equivalents at the end of the financial year as shown in the Statement of Cash Flows is reconciled to the related items in the Balance Sheet as follows:-

	2017 \$	2016 \$
Cash deposits with banks	<u>97,141</u>	<u>100,811</u>
	<u>97,141</u>	<u>100,811</u>

**RECONCILIATION OF CASH FLOW FROM OPERATIONS
WITH OPERATING SURPLUS FROM ORDINARY ACTIVITIES**

Operating Deficit (Surplus)	(5,960)	(8,400)
Changes in Assets and Liabilities		
(Increase)/decrease in Receivables	(2,129)	(1,980)
Increase/(decrease) in Trade Creditors and Accruals	161	-
	<u> </u>	<u> </u>
CASH FLOW FROM/(USED IN) OPERATIONS	<u>(3,670)</u>	<u>(10,380)</u>



WESTERN PORT SEAGRASS PARTNERSHIP LIMITED
ACN 096 685 871

NOTES TO THE FINANCIAL STATEMENTS
FOR THE YEAR ENDED 30 JUNE 2017

The financial statements are for Western Seagrass Partnership Limited as an individual entity, incorporated and domiciled in Australia. Western Seagrass Partnership Limited is a company limited by guarantee.

Note 1 SUMMARY OF SIGNIFICANT ACCOUNTING POLICIES

The financial statements are general purpose financial statements that have been prepared in accordance with Australian Accounting Standards (including Australian Accounting Interpretations) and the Corporations Act 2001.

The financial statements have been prepared on an accruals basis and are based on historical costs, modified where applicable, by the measurement of fair value of selected non-current assets, financial assets and financial liabilities.

The following is a summary of the material accounting policies adopted by the company in the preparation of the financial statements. The accounting policies have been consistently applied, unless otherwise stated.

(a) Revenue Recognition

Revenue from the rendering of a service is recognised upon delivery of the service to the customer.

Grant revenue is recognised in the statement of comprehensive income when the company gains control of the grant and it is probable that the economic benefits gained from the grant will flow to the company and the amount of the grant can be measured reliably.

(b) Income Tax

The company is a non-profit entity and is exempt from income and payroll tax. The company does collect and pay goods and services tax.

(c) Trade and Other Payables

Trade and other payables represent the liability outstanding at the end of the reporting period for goods and services received by the company during the reporting period which remain unpaid. The balance is recognised as a current liability with the amounts normally paid within 30 days of recognition.



WESTERN PORT SEAGRASS PARTNERSHIP LIMITED
ACN 096 685 871

NOTES TO THE FINANCIAL STATEMENTS
FOR THE YEAR ENDED 30 JUNE 2017

Note 1 STATEMENT OF SIGNIFICANT ACCOUNTING POLICIES (cont)

- (d) **Cash**
For the purposes of the Statement of Cash Flows, cash includes cash on hand and in banks, deposits at call and money market investments which are readily convertible into cash.
- (e) **Goods and Services Tax (GST)**
Revenue, expenses and assets are recognised net of the amount of GST, except where the amount of GST incurred is not recoverable from the Australian Taxation Office. In these circumstances, the GST is recognised as part of the cost of acquisition of the asset or as part of an item of expense.

Receivables and payables in the statement of financial position are shown inclusive of GST.

Critical Accounting Estimates and Judgements

The directors' estimates and judgements incorporated into the financial report are based on historical results and the best available current information. Estimates assume a reasonable expectation of future events and are based on current trends and economic data from internal and external sources.

Trust liabilities and right of indemnity

The company acts as trustee of the Westernport Seagrass Public Fund. The Public Fund was established during the 2007 year. Liabilities incurred as trustee on behalf of the Public Fund are not recognised in the financial report when it is not probable that the company will have to meet any of those trust liabilities from its own resources. When it is probable that the company will have to meet some trust liabilities, a liability for the Deficiency in Trust Right of Indemnity is brought to account. As at 30 June 2010 the Public Fund had no liabilities.



WESTERN PORT SEAGRASS PARTNERSHIP LIMITED
ACN 096 685 871

NOTES TO THE FINANCIAL STATEMENTS
FOR THE YEAR ENDED 30 JUNE 2017

	2017	2016
	\$	\$
Note 2 REVENUES		
Revenue from operating activities:		
Grants	11,800	5,000
Donations – Transfer Public Fund	-	10,000
Interest	2,007	2,557
Total revenue	<u>13,807</u>	<u>17,557</u>
Note 3 EXPENSES		
<u>Administration Expenses</u>		
Bank Charges	35	160
Filing Fees & Sundry Expenses	651	844
Donations	-	1,840
Insurance	528	997
	<u>1,214</u>	<u>3,841</u>
<u>Project & Sponsorship Expenses</u>		
Project Delivery	18,553	22,116
	<u>18,553</u>	<u>22,116</u>
Note 4 CASH ASSETS		
Cash deposits with banks	97,141	100,811
	<u>97,141</u>	<u>100,811</u>



WESTERN PORT SEAGRASS PARTNERSHIP LIMITED
ACN 096 685 871

NOTES TO THE FINANCIAL STATEMENTS
FOR THE YEAR ENDED 30 JUNE 2017

	2017	2016
	\$	\$
Note 5 TRADE & OTHER RECEIVABLES		
Other Debtors	-	-
GST Refundable	-	2,129
	<u>-</u>	<u>2,129</u>
 Note 6 PAYABLES – CURRENT		
GST	161	-
Creditors and accruals	-	-
	<u>161</u>	<u>-</u>
 Note 7 MEMBERS' GUARANTEE		
The company is limited by guarantee. If the company is wound up, the Constitution states that each member is required to contribute \$100 each towards meeting any outstanding obligations of the company. At 30 June 2017 the number of members was 24.		
 Note 8 RELATED PARTY TRANSACTIONS		
Directors' Remuneration There was no remuneration paid or payable to the directors of the company.		
 Note 9 COMPANY DETAILS		
The registered office of the company is:		
C/- Morey Wickham Level 1, 1091 Toorak Road Camberwell 3124		



WESTERN PORT SEAGRASS PARTNERSHIP LIMITED
ACN 096 685 871

NOTES TO THE FINANCIAL STATEMENTS
FOR THE YEAR ENDED 30 JUNE 2017

Note 10 ECONOMIC DEPENDENCY

A significant portion of income is received by way of recurrent grants from State and Commonwealth Governments.



Westernport Seagrass Partnership Limited
ACN 000 111 222
Compilation Report To Westernport Seagrass Partnership Limited

We have compiled the accompanying special purpose financial statements of Western Port Seagrass Partnership Limited, which comprise the balance sheet as at 30 June 2017, the income statement for the year then ended, a summary of significant accounting policies, other explanatory notes and the additional information contained in the detailed profit and loss. The specific purpose for which the special purpose financial statements have been prepared is set out in the notes to the accounts.

The Responsibility of the Directors

The directors of Western Port Seagrass Partnership Limited are solely responsible for the information contained in the special purpose financial statements, the reliability, accuracy and completeness of the information and for the determination that the basis of accounting used is appropriate to meet their needs and for the purpose that the financial statements were prepared.

Our Responsibility

On the basis of information provided by the directors, we have compiled the accompanying special purpose financial statements in accordance with the basis of accounting and APES 315: Compilation of Financial Information.

We have applied professional expertise in accounting and financial reporting to compile these financial statements on the basis of accounting described in the notes to the financial statements. We have complied with the relevant ethical requirements of APES 110 Code of Ethics for Professional Accountants.

Assurance Disclaimer

Since a compilation engagement is not an assurance engagement, we are not required to verify the reliability, accuracy or completeness of the information provided to us by management to compile these financial statements. Accordingly, we do not express an audit opinion or a review conclusion on these financial statements.

The special purpose financial statements were compiled for the benefit of the directors who are responsible for the reliability, accuracy and completeness of the information used to compile them. We do not accept responsibility for the contents of the special purpose financial statements.

Dianne Wickham
Morey Wickham
28 August 2017